

Features

Line LED LL series is a small profile, high performance LED strip. It offers excellent color quality with 95+ CRI and 95+ R9 values across the entire range of outputs, while sustaining efficacy above 90 lumens per watt. The simple range consists of just two configurations, 42 and 72 LEDs per foot, with multiple outputs from each, providing a range from 100 to over 500 lumens per foot. Industry-best color consistency is ensured with single-binned LEDs. LL72 provides smooth, dot-free illumination in all Luminii extrusions when paired with a frosted lens.



LL42



LL72

Mounting

LED strip is equipped with 3M™ adhesive transfer tape (9472LE).

Applications

Indoor only - millwork, cove, architectural reveals, undercabinet, display case, handrail, accent lighting.

Approvals

Class 2 damp listed

Operating voltage

24 VDC

Life (L70)

50,000 hours

Warranty

5 years



Technical information

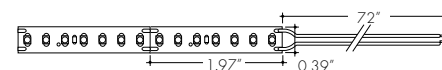
TYPE	LL42			LL72		
OUTPUT OPTIONS	SO	HO	VHO	SO	HO	VHO
Lumens Output (3000K)	132 lm/ft	222 lm/ft	322 lm/ft	272 lm/ft	442 lm/ft	537 lm/ft
Average Power Consumption (for a 4' section)	1.4 W/ft	2.4 W/ft	3.6 W/ft	2.8 W/ft	4.8 W/ft	6.0 W/ft
Efficacy	94 lm/W	93 lm/W	89 lm/W	97 lm/W	92 lm/W	90 lm/W
Cutting Increment (in)	1.97"			1.16"		
Pitch Length	0.28"			0.17"		
Max Run Length (in series)	55 ft	45 ft	35 ft	40 ft	31 ft	22 ft
Dimensions	0.39"W x 0.09" H					

CCT	Multiplier (reference - 3000K)	TM-30			
		CRI	R _f	R _g	R ₉
1900K	0.55	96	94	97	90
2200K	0.70	96	95	101	89
2400K	0.72	98	97	101	91
2700K	0.74	97	96	101	91
3000K	1.00	97	95	104	97
3500K	1.02	97	94	105	97
4100K	1.07	97	90	99	97

Section Start/End Options

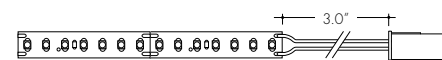
SL

Soldered lead wires (72")



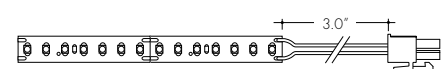
LF

Lead Female 3" cable



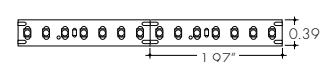
LM

Lead Male 3" cable



NC

No connector



Ordering code

MODEL	OUTPUT	CCT	SECTION START ¹	SECTION END ¹	LENGTH
LL42 - LineLED LL42 LL72 - LineLED LL72	SO - Standard HO - High VHO - Very High	19K - 1900K 22K - 2200K 24K - 2400K 27K - 2700K 30K - 3000K 35K - 3500K 41K - 4100K	SL - Soldered lead wires (72") NC - No connector LM - Lead Male LF - Lead Female	SL - Soldered lead wires (72") NC - No connector LM - Lead Male LF - Lead Female	Ordered in one foot increments. See chart above for max run length.

¹ - Additional Connectors and Leads available, see below.

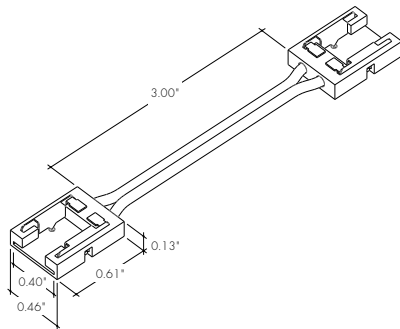
Minii Connectors

Minii connectors are easy, field-installable accessories that make joining LL strip simple! Their minimal width allows them to fit into extrusions, while their transparent frame eliminates dark spots.

Note: verify internal extrusion dimensions to confirm compatibility

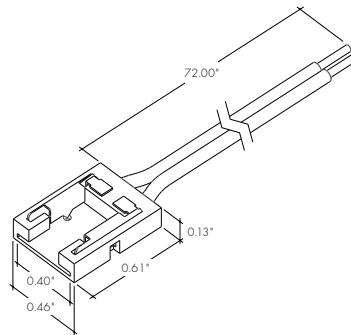
LL-PJC-10-03

Jumper minii connector with 3" wire for LL42/72 LED strip



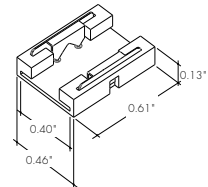
LL-PFC-10-72

Power feed minii connector with 72" wire for LL42/72 LED strip

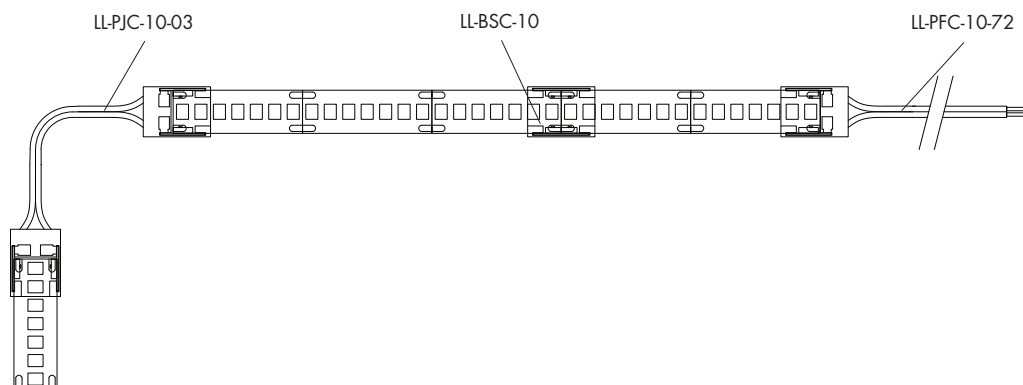


LL-BSC-10

Butt splice minii connector for LL42/72 LED strip



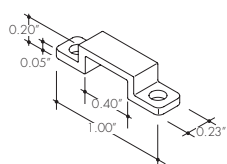
Sample Layout



Accessories

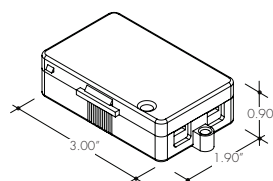
CL1

Mounting clip



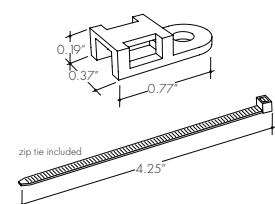
LVSP-4T-BK

Low Voltage, 4 Terminal Splice Box, Black



LL.ZIP

Cable/Wire Strain Relief Clip



Recommended every 12" when LineLED strip is facing down

Lens Options / Light Transmission

<div>C</div> <div>Clear</div>	<div>HF</div> <div>Half (50%) Frosted</div>	<div>GR</div> <div>Graze</div>	<div>F</div> <div>Frosted</div>	<div>FF</div> <div>Flat Frosted</div>	<div>R</div> <div>Raised</div>	<div>S</div> <div>Square Frosted</div>	<div>Q</div> <div>Round Square Frosted</div>	<div>13°</div> <div>13° Semi-Frosted</div>											
<div>BOS Channel (BOSC-XX)</div> <div></div>	<div>CLA Channel (CLAC-XX)</div> <div></div>	<div>MCAL Channel (MCALC-XX)</div> <div></div>	<div>K45V Channel (K45V-XX)</div> <div></div>																
<div>F</div> <div>52%</div> <td><div>SI</div><div>66%</div><td><div>R</div><div>60%</div><td><div>G</div><div>76%</div></td><td><div>S</div><div>62%</div><td><div>Q</div><div>65%</div></td><td><div>C</div><div>94%</div></td><td><div>C</div><div>82%</div><td><div>HF</div><div>68%</div><td><div>F</div><div>45%</div><td><div>13°</div><div>75%</div></td></td></td></td></td></td></td>	<div>SI</div> <div>66%</div> <td><div>R</div><div>60%</div><td><div>G</div><div>76%</div></td><td><div>S</div><div>62%</div><td><div>Q</div><div>65%</div></td><td><div>C</div><div>94%</div></td><td><div>C</div><div>82%</div><td><div>HF</div><div>68%</div><td><div>F</div><div>45%</div><td><div>13°</div><div>75%</div></td></td></td></td></td></td>	<div>R</div> <div>60%</div> <td><div>G</div><div>76%</div></td> <td><div>S</div><div>62%</div><td><div>Q</div><div>65%</div></td><td><div>C</div><div>94%</div></td><td><div>C</div><div>82%</div><td><div>HF</div><div>68%</div><td><div>F</div><div>45%</div><td><div>13°</div><div>75%</div></td></td></td></td></td>	<div>G</div> <div>76%</div>	<div>S</div> <div>62%</div> <td><div>Q</div><div>65%</div></td> <td><div>C</div><div>94%</div></td> <td><div>C</div><div>82%</div><td><div>HF</div><div>68%</div><td><div>F</div><div>45%</div><td><div>13°</div><div>75%</div></td></td></td></td>	<div>Q</div> <div>65%</div>	<div>C</div> <div>94%</div>	<div>C</div> <div>82%</div> <td><div>HF</div><div>68%</div><td><div>F</div><div>45%</div><td><div>13°</div><div>75%</div></td></td></td>	<div>HF</div> <div>68%</div> <td><div>F</div><div>45%</div><td><div>13°</div><div>75%</div></td></td>	<div>F</div> <div>45%</div> <td><div>13°</div><div>75%</div></td>	<div>13°</div> <div>75%</div>									
<div>K45R Channel (K45R-XX)</div> <div></div>	<div>KiloR Channel (KILORC-XX)</div> <div></div>	<div>Kilo Channel (KILOC-XX)</div> <div></div>	<div>KL Channel (KLC-XX)</div> <div></div>																
<div>RF</div> <div>61%</div>	<div>C</div> <div>85%</div> <td><div>F</div><div>75%</div></td> <td><div>C</div><div>85%</div><td><div>F</div><div>75%</div></td><td><div>C</div><div>81%</div><td><div>HF</div><div>67%</div><td><div>F</div><div>51%</div></td></td></td></td>	<div>F</div> <div>75%</div>	<div>C</div> <div>85%</div> <td><div>F</div><div>75%</div></td> <td><div>C</div><div>81%</div><td><div>HF</div><div>67%</div><td><div>F</div><div>51%</div></td></td></td>	<div>F</div> <div>75%</div>	<div>C</div> <div>81%</div> <td><div>HF</div><div>67%</div><td><div>F</div><div>51%</div></td></td>	<div>HF</div> <div>67%</div> <td><div>F</div><div>51%</div></td>	<div>F</div> <div>51%</div>												
<div>KRL Channel (KRLC-XX)</div> <div></div>	<div>KM Channel (KMC-XX)</div> <div></div>	<div>KRM Channel (KRMC-XX)</div> <div></div>	<div>KS Channel (KSC-XX)</div> <div></div>																
<div>C</div> <div>81%</div> <td><div>HF</div><div>67%</div><td><div>F</div><div>51%</div></td><td><div>C</div><div>82%</div><td><div>HF</div><div>68%</div><td><div>F</div><div>45%</div><td><div>FF</div><div>52%</div><td><div>R</div><div>58%</div><td><div>GR</div><div>56%</div></td><td><div>C</div><div>82%</div><td><div>HF</div><div>68%</div><td><div>F</div><div>45%</div><td><div>FF</div><div>52%</div><td><div>GR</div><div>56%</div></td><td><div>C</div><div>86%</div><td><div>HF</div><div>71%</div><td><div>F</div><div>56%</div><td><div>FF</div><div>60%</div><td><div>R</div><div>85%</div><td><div>M</div><div>64%</div></td></td></td></td></td></td></td></td></td></td></td></td></td></td></td></td>	<div>HF</div> <div>67%</div> <td><div>F</div><div>51%</div></td> <td><div>C</div><div>82%</div><td><div>HF</div><div>68%</div><td><div>F</div><div>45%</div><td><div>FF</div><div>52%</div><td><div>R</div><div>58%</div><td><div>GR</div><div>56%</div></td><td><div>C</div><div>82%</div><td><div>HF</div><div>68%</div><td><div>F</div><div>45%</div><td><div>FF</div><div>52%</div><td><div>GR</div><div>56%</div></td><td><div>C</div><div>86%</div><td><div>HF</div><div>71%</div><td><div>F</div><div>56%</div><td><div>FF</div><div>60%</div><td><div>R</div><div>85%</div><td><div>M</div><div>64%</div></td></td></td></td></td></td></td></td></td></td></td></td></td></td></td>	<div>F</div> <div>51%</div>	<div>C</div> <div>82%</div> <td><div>HF</div><div>68%</div><td><div>F</div><div>45%</div><td><div>FF</div><div>52%</div><td><div>R</div><div>58%</div><td><div>GR</div><div>56%</div></td><td><div>C</div><div>82%</div><td><div>HF</div><div>68%</div><td><div>F</div><div>45%</div><td><div>FF</div><div>52%</div><td><div>GR</div><div>56%</div></td><td><div>C</div><div>86%</div><td><div>HF</div><div>71%</div><td><div>F</div><div>56%</div><td><div>FF</div><div>60%</div><td><div>R</div><div>85%</div><td><div>M</div><div>64%</div></td></td></td></td></td></td></td></td></td></td></td></td></td></td>	<div>HF</div> <div>68%</div> <td><div>F</div><div>45%</div><td><div>FF</div><div>52%</div><td><div>R</div><div>58%</div><td><div>GR</div><div>56%</div></td><td><div>C</div><div>82%</div><td><div>HF</div><div>68%</div><td><div>F</div><div>45%</div><td><div>FF</div><div>52%</div><td><div>GR</div><div>56%</div></td><td><div>C</div><div>86%</div><td><div>HF</div><div>71%</div><td><div>F</div><div>56%</div><td><div>FF</div><div>60%</div><td><div>R</div><div>85%</div><td><div>M</div><div>64%</div></td></td></td></td></td></td></td></td></td></td></td></td></td>	<div>F</div> <div>45%</div> <td><div>FF</div><div>52%</div><td><div>R</div><div>58%</div><td><div>GR</div><div>56%</div></td><td><div>C</div><div>82%</div><td><div>HF</div><div>68%</div><td><div>F</div><div>45%</div><td><div>FF</div><div>52%</div><td><div>GR</div><div>56%</div></td><td><div>C</div><div>86%</div><td><div>HF</div><div>71%</div><td><div>F</div><div>56%</div><td><div>FF</div><div>60%</div><td><div>R</div><div>85%</div><td><div>M</div><div>64%</div></td></td></td></td></td></td></td></td></td></td></td></td>	<div>FF</div> <div>52%</div> <td><div>R</div><div>58%</div><td><div>GR</div><div>56%</div></td><td><div>C</div><div>82%</div><td><div>HF</div><div>68%</div><td><div>F</div><div>45%</div><td><div>FF</div><div>52%</div><td><div>GR</div><div>56%</div></td><td><div>C</div><div>86%</div><td><div>HF</div><div>71%</div><td><div>F</div><div>56%</div><td><div>FF</div><div>60%</div><td><div>R</div><div>85%</div><td><div>M</div><div>64%</div></td></td></td></td></td></td></td></td></td></td></td>	<div>R</div> <div>58%</div> <td><div>GR</div><div>56%</div></td> <td><div>C</div><div>82%</div><td><div>HF</div><div>68%</div><td><div>F</div><div>45%</div><td><div>FF</div><div>52%</div><td><div>GR</div><div>56%</div></td><td><div>C</div><div>86%</div><td><div>HF</div><div>71%</div><td><div>F</div><div>56%</div><td><div>FF</div><div>60%</div><td><div>R</div><div>85%</div><td><div>M</div><div>64%</div></td></td></td></td></td></td></td></td></td></td>	<div>GR</div> <div>56%</div>	<div>C</div> <div>82%</div> <td><div>HF</div><div>68%</div><td><div>F</div><div>45%</div><td><div>FF</div><div>52%</div><td><div>GR</div><div>56%</div></td><td><div>C</div><div>86%</div><td><div>HF</div><div>71%</div><td><div>F</div><div>56%</div><td><div>FF</div><div>60%</div><td><div>R</div><div>85%</div><td><div>M</div><div>64%</div></td></td></td></td></td></td></td></td></td>	<div>HF</div> <div>68%</div> <td><div>F</div><div>45%</div><td><div>FF</div><div>52%</div><td><div>GR</div><div>56%</div></td><td><div>C</div><div>86%</div><td><div>HF</div><div>71%</div><td><div>F</div><div>56%</div><td><div>FF</div><div>60%</div><td><div>R</div><div>85%</div><td><div>M</div><div>64%</div></td></td></td></td></td></td></td></td>	<div>F</div> <div>45%</div> <td><div>FF</div><div>52%</div><td><div>GR</div><div>56%</div></td><td><div>C</div><div>86%</div><td><div>HF</div><div>71%</div><td><div>F</div><div>56%</div><td><div>FF</div><div>60%</div><td><div>R</div><div>85%</div><td><div>M</div><div>64%</div></td></td></td></td></td></td></td>	<div>FF</div> <div>52%</div> <td><div>GR</div><div>56%</div></td> <td><div>C</div><div>86%</div><td><div>HF</div><div>71%</div><td><div>F</div><div>56%</div><td><div>FF</div><div>60%</div><td><div>R</div><div>85%</div><td><div>M</div><div>64%</div></td></td></td></td></td></td>	<div>GR</div> <div>56%</div>	<div>C</div> <div>86%</div> <td><div>HF</div><div>71%</div><td><div>F</div><div>56%</div><td><div>FF</div><div>60%</div><td><div>R</div><div>85%</div><td><div>M</div><div>64%</div></td></td></td></td></td>	<div>HF</div> <div>71%</div> <td><div>F</div><div>56%</div><td><div>FF</div><div>60%</div><td><div>R</div><div>85%</div><td><div>M</div><div>64%</div></td></td></td></td>	<div>F</div> <div>56%</div> <td><div>FF</div><div>60%</div><td><div>R</div><div>85%</div><td><div>M</div><div>64%</div></td></td></td>	<div>FF</div> <div>60%</div> <td><div>R</div><div>85%</div><td><div>M</div><div>64%</div></td></td>	<div>R</div> <div>85%</div> <td><div>M</div><div>64%</div></td>	<div>M</div> <div>64%</div>

*Not compatible with Minii connectors

Installation

All mounting channels are field cuttable using miter saw with circular blade suitable for cutting aluminum.

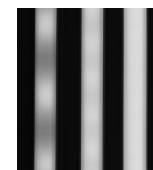
Ordering

Extrusions are sold separately. View respective specsheets for details on ordering extrusions and their accessories (endcaps, mounting brackets, etc).

Led Dotting per Extrusion

using the frosted lens option

Extrusion	LED Model LL42	LED Model LL72
BOS	ND	ND
CLA	ND	ND
MCAL	ND	ND
K45V	CD	CD
KM	ND	ND
KRM	ND	ND
KS	CD	ND
K45R	ND	ND
KILOR	ND	ND
KILO	ND	ND
KL	CD	ND
KRL	CD	ND



CD - Clear Dotting
SD - Slight Dotting
ND - No Dotting

Lens Options / Light Transmission



Clear

Half (50%)
Frosted

Graze



Frosted

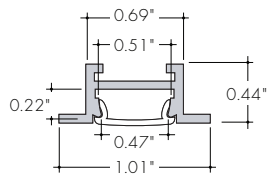
Flat
Frosted

Raised

Square
FrostedRound Square
Frosted13°
Semi-Frosted

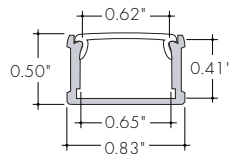
*Not compatible with Minii connectors

KRS Channel (KRSC-XX)



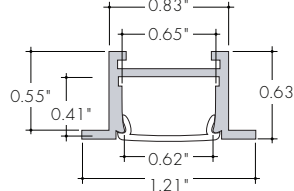
C	HF	F	FF	M
86%	71%	56%	60%	64%

KXL Channel (KXLC-XX)



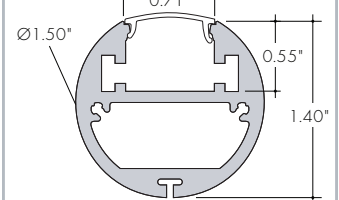
C	HF	F
81%	67%	51%

KRXL Channel (KRXLC-XX)



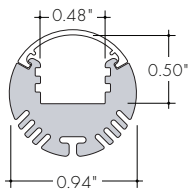
C	HF	F
81%	67%	51%

RO15 Channel (RO15-XX)



C	F
65%	41%

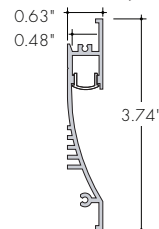
RO Channel (ROC-XX)



C	F
79%	50%

*Not compatible with Minii connectors

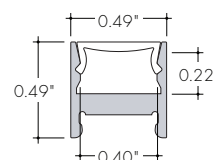
Wall + Channel (WPC-XX)



F
65%

*Not compatible with Minii connectors

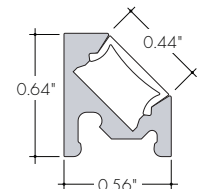
Myka Channel (MKC-XX)



C	F	HF	MF	BLV	WLV
73%	61%	57%	45%	37%	25%

*Not compatible with Minii connectors

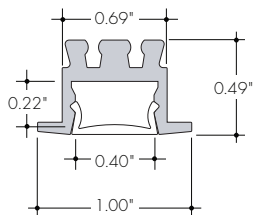
Myka 45 (MK45C-XX)



C	F	HF	MF	BLV	WLV
73%	61%	57%	45%	37%	25%

*Not compatible with Minii connectors

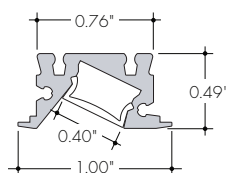
Myka R Channel (MKRC-XX)



C	F	HF	MF	BLV	WLV
73%	61%	57%	45%	37%	25%

*Not compatible with Minii connectors

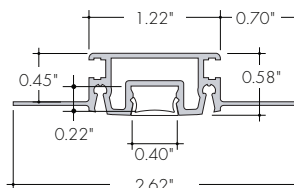
Myka RA Channel (MKRAC-XX)



C	F	HF	MF	BLV	WLV
73%	61%	57%	45%	37%	25%

*Not compatible with Minii connectors

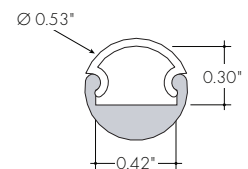
Myka RL Channel (MKLC-XX)



C	F	HF	MF	BLV	WLV
73%	61%	57%	45%	37%	25%

*Not compatible with Minii connectors

Myka Round (MKROC-XX)



RF
57%

Installation

All mounting channels are field cuttable using miter saw with circular blade suitable for cutting aluminum.

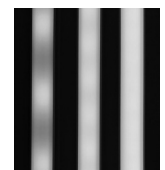
Ordering

Extrusions are sold separately. View respective specsheets for details on ordering extrusions and their accessories (endcaps, mounting brackets, etc).

Led Dotting per Extrusion

using the frosted lens option

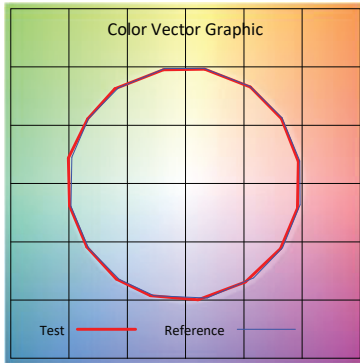
Extrusion	LED Model LL42	LED Model LL72
KRS	CD	ND
KXL	ND	ND
KRXL	ND	ND
RO15	ND	ND
RO	ND	ND
WP	SD	SD
MK	SD	ND
MK45	SD	ND
MKR	SD	ND
MKRA	SD	ND
MKLC	SD	ND
MKRO	ND	ND



CD SD ND
CD - Clear Dotting
SD - Slight Dotting
ND - No Dotting

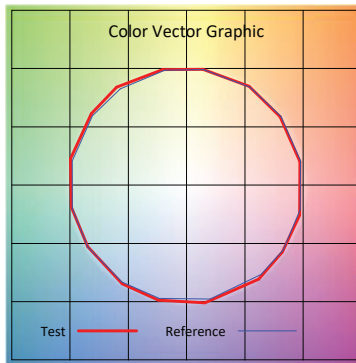
TM-30-15: Data

2200K



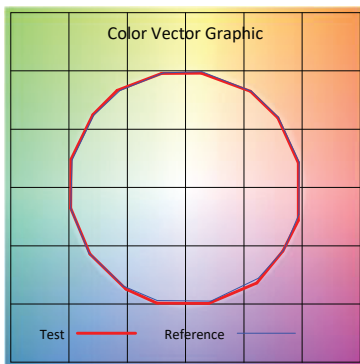
Hue Bin	Rf	Graphic Shifts (%)	
		Chroma	Hue
1	96.8	-1.4%	-0.2%
2	97.4	-0.7%	-0.3%
3	96.2	-0.5%	-0.4%
4	97.5	-0.8%	-1.0%
5	97.3	-0.8%	-1.1%
6	95.4	1.0%	2.8%
7	98.1	0.5%	0.6%
8	95.7	2.8%	1.3%
9	97.0	1.1%	-0.8%
10	96.4	0.6%	-1.6%
11	96.0	1.3%	-2.2%
12	94.7	0.8%	-3.0%
13	92.0	0.2%	-7.8%
14	87.2	-1.1%	-7.9%
15	96.6	-0.9%	-1.7%
16	94.1	-1.6%	-3.2%

2400K



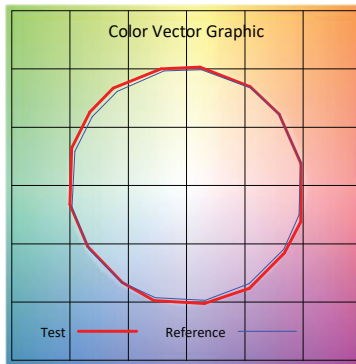
Hue Bin	Rf	Graphic Shifts (%)	
		Chroma	Hue
1	97.3	-0.7%	-0.6%
2	98.0	-0.7%	0.1%
3	96.7	0.1%	1.2%
4	97.4	0.0%	0.5%
5	97.0	1.0%	1.9%
6	95.0	2.9%	1.6%
7	96.4	1.7%	-0.9%
8	96.2	1.9%	-1.3%
9	97.2	0.4%	-1.1%
10	97.9	-0.3%	-0.3%
11	96.9	1.2%	1.2%
12	94.8	1.7%	-0.4%
13	93.6	2.2%	-4.9%
14	92.7	2.2%	-3.9%
15	96.7	0.4%	-2.0%
16	92.9	0.3%	-4.7%

2700K



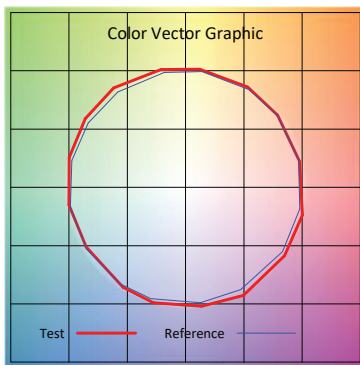
Hue Bin	Rf	Graphic Shifts (%)	
		Chroma	Hue
1	97.1	-1.0%	-0.6%
2	98.2	-0.7%	-0.2%
3	97.0	-0.5%	0.8%
4	97.1	-1.2%	0.2%
5	96.9	-0.1%	1.9%
6	96.2	1.7%	1.8%
7	97.3	0.8%	-0.1%
8	97.9	1.0%	-0.3%
9	98.2	-0.1%	-0.1%
10	96.8	-0.2%	1.5%
11	94.8	0.9%	3.0%
12	94.4	2.4%	0.2%
13	95.7	1.6%	-2.4%
14	94.2	2.7%	-3.1%
15	96.5	-0.0%	-1.4%
16	92.3	0.7%	-5.3%

3000K



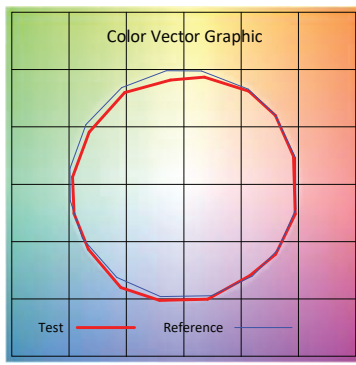
Hue Bin	Rf	Graphic Shifts (%)	
		Chroma	Hue
1	95.9	0.2%	-1.7%
2	97.4	0.2%	-0.2%
3	96.3	0.7%	1.2%
4	95.1	1.9%	1.6%
5	94.9	2.3%	2.1%
6	92.6	4.3%	1.2%
7	92.1	3.9%	-2.2%
8	93.1	3.3%	-2.3%
9	94.8	1.2%	-2.8%
10	94.6	-0.5%	-2.7%
11	96.2	-0.1%	1.0%
12	93.7	2.7%	-0.3%
13	95.7	2.5%	-1.3%
14	94.2	3.6%	-2.1%
15	94.2	2.2%	-2.5%
16	92.0	2.5%	-5.3%

3500K



Hue Bin	Rf	Graphic Shifts (%)	
		Chroma	Hue
1	96.4	0.5%	-1.5%
2	97.7	0.3%	0.2%
3	94.7	1.0%	2.2%
4	94.4	1.7%	2.2%
5	93.4	3.0%	2.3%
6	91.4	5.0%	1.0%
7	92.7	4.1%	-1.6%
8	94.1	2.8%	-2.1%
9	95.0	0.9%	-2.1%
10	95.9	-0.8%	-1.6%
11	93.5	1.1%	3.4%
12	91.7	3.1%	3.0%
13	95.3	3.1%	0.5%
14	93.0	5.3%	-0.8%
15	93.5	3.4%	-2.1%
16	90.9	3.2%	-4.6%

4100K



Hue Bin	Rf	Graphic Shifts (%)	
		Chroma	Hue
1	91.5	-1.3%	1.6%
2	95.3	-0.1%	-0.4%
3	95.4	-1.0%	-1.3%
4	89.1	-4.8%	-3.5%
5	86.6	-8.7%	-2.1%
6	91.9	-5.0%	0.5%
7	87.8	-6.2%	4.0%
8	86.7	-3.5%	6.7%
9	82.7	-1.2%	11.7%
10	81.6	1.0%	10.5%
11	84.5	5.4%	8.0%
12	92.6	3.3%	-0.3%
13	90.9	2.3%	3.9%
14	92.6	-1.5%	-1.5%
15	86.6	0.5%	-4.4%
16	86.7	0.5%	-4.7%

Power Consumption

Tested at full power with PDC Series power supplies.

Nominal Length	LL42						LL72					
	SO		HO		VHO		SO		HO		VHO	
	W/ft	Total Wattage	W/ft	Total Wattage	W/ft	Total Wattage	W/ft	Total Wattage	W/ft	Total Wattage	W/ft	Total Wattage
1	1.2	1.2	2.2	2.2	3.2	3.2	2.7	2.7	4.4	4.4	6.2	6.2
2	1.2	2.4	2.5	4.9	3.2	6.4	2.8	5.6	4.7	9.4	6.3	12.6
3	1.4	4.1	2.4	7.0	3.4	10.1	2.7	8.2	4.6	13.8	6.1	18.4
4	1.4	5.3	2.4	9.2	3.6	14.1	2.7	10.7	4.5	17.8	6.0	23.5
5	1.4	7.1	2.3	11.3	3.6	17.8	2.8	13.8	4.6	22.8	5.8	29.1
6	1.4	8.7	2.3	13.8	3.6	21.6	2.7	16.4	4.4	26.6	5.8	34.7
7	1.4	10.0	2.3	16.1	3.6	25.6	2.7	19.2	4.3	30.8	5.6	40.0
8	1.4	11.1	2.3	18.1	3.6	28.9	2.7	21.8	4.3	34.6	5.5	44.2
9	1.4	12.4	2.3	20.3	3.5	31.6	2.7	24.1	4.3	38.4	5.5	49.2
10	1.4	13.9	2.3	23.0	3.5	34.7	2.7	26.7	4.2	42.0	5.4	54.0
11	1.4	15.4	2.3	25.0	3.4	37.3	2.6	29.1	4.1	45.3	5.3	58.1
12	1.4	16.4	2.3	27.2	3.3	40.0	2.6	31.2	4.0	47.8	5.2	61.9
13	1.4	17.9	2.2	29.1	3.3	42.7	2.6	33.5	4.0	51.7	4.9	64.3
14	1.4	19.0	2.2	31.0	3.3	45.4	2.5	35.5	3.9	54.9	5.1	72.0
15	1.4	20.2	2.2	32.5	3.2	48.0	2.5	37.7	3.9	57.6	5.0	74.4
16	1.3	21.7	2.2	35.1	3.2	51.3	2.5	40.4	3.8	61.5	4.9	78.7
17	1.3	22.7	2.1	36.6	3.1	53.7	2.5	42.4	3.8	63.8	4.7	80.1
18	1.3	23.9	2.1	38.1	3.1	55.8	2.5	44.9	3.7	66.9	4.6	84.0
19	1.3	25.0	2.1	39.8	3.1	58.1	2.4	46.5	3.6	69.0	4.6	87.2
20	1.3	26.5	2.2	43.4	3.0	60.1	2.4	48.5	3.6	71.7	4.5	90.0
21	1.3	27.5	2.1	45.0	3.0	62.3	2.4	49.8	3.5	74.5	4.4	92.5
22	1.3	28.8	2.1	46.6	2.9	64.6	2.3	51.5	3.5	76.2	4.3	95.6
23	1.3	30.0	2.1	48.2	2.9	67.0	2.3	52.6	3.4	78.0		
24	1.3	31.1	2.1	49.7	2.9	69.1	2.3	55.4	3.4	80.6		
25	1.3	32.4	2.1	51.3	2.9	71.4	2.3	56.8	3.3	82.2		
26	1.3	33.4	2.0	52.6	2.8	73.1	2.2	57.3	3.3	84.4		
27	1.3	34.6	2.0	54.2	2.8	75.0	2.2	58.1	3.2	86.5		
28	1.3	35.6	2.0	55.5	2.7	76.6	2.2	60.8	3.2	88.2		
29	1.3	36.6	2.0	56.8	2.7	78.1	2.2	63.3	3.1	89.4		
30	1.3	37.6	1.9	58.1	2.7	79.7	2.2	65.1	3.0	90.9		
31	1.2	38.5	1.9	59.3	2.6	81.1	2.1	64.9	3.0	91.5		
32	1.2	39.4	1.9	60.6	2.6	82.5	2.1	67.8				
33	1.2	40.4	1.9	61.8	2.5	83.8	2.1	69.6				
34	1.2	41.2	1.9	63.0	2.5	85.1	2.1	69.9				
35	1.2	42.1	1.8	64.2	2.5	86.5	2.0	71.4				
36	1.2	43.0	1.8	65.2			2.0	72.8				
37	1.2	44.0	1.8	66.4			2.0	73.7				
38	1.2	44.9	1.8	67.4			2.0	75.5				
39	1.2	45.8	1.8	68.5			1.9	75.9				
40	1.2	46.6	1.7	69.4			1.9	76.7				
41	1.2	47.3	1.7	70.3								
42	1.1	48.0	1.7	71.3								
43	1.1	48.8	1.7	72.2								
44	1.1	49.5	1.7	73.2								
45	1.1	50.1	1.6	74.0								
46	1.1	50.9										
47	1.1	51.7										
48	1.1	52.4										
49	1.1	53.1										
50	1.1	53.8										
51	1.1	54.4										
52	1.1	55.0										
53	1.1	55.7										
54	1.0	56.3										
55	1.0	56.8										

Voltage Drop Calculator

The below chart assumes nominal voltage of 24 Volts and a Voltage Drop Allowance of 3% through the wire

Wattage [W]	Maximum Wire Length From Power Supply to Start of Run [ft]						
	12 AWG	14 AWG	16 AWG	18 AWG	20 AWG	22 AWG	24 AWG
5	1088.2	684.4	430.3	270.6	170.2	107.1	67.3
10	544.1	342.2	215.1	135.3	85.1	53.5	33.7
15	362.7	228.1	143.4	90.2	56.7	35.7	22.4
20	272.0	171.1	107.6	67.7	42.6	26.8	16.8
25	217.6	136.9	86.1	54.1	34.0	21.4	13.5
30	181.4	114.1	71.7	45.1	28.4	17.8	11.2
35	155.5	97.8	61.5	38.7	24.3	15.3	9.6
40	136.0	85.5	53.8	33.8	21.3	13.4	8.4
45	120.9	76.0	47.8	30.1	18.9	11.9	7.5
50	108.8	68.4	43.0	27.1	17.0	10.7	6.7
55	98.9	62.2	39.1	24.6	15.5	9.7	6.1
60	90.7	57.0	35.9	22.6	14.2	8.9	5.6
65	83.7	52.6	33.1	20.8	13.1	8.2	5.2
70	77.7	48.9	30.7	19.3	12.2	7.6	4.8
75	72.5	45.6	28.7	18.0	11.3	7.1	4.5
80	68.0	42.8	26.9	16.9	10.6	6.7	4.2
85	64.0	40.3	25.3	15.9	10.0	6.3	4.0
90	60.5	38.0	23.9	15.0	9.5	5.9	3.7
96	56.7	35.6	22.4	14.1	8.9	5.6	3.5

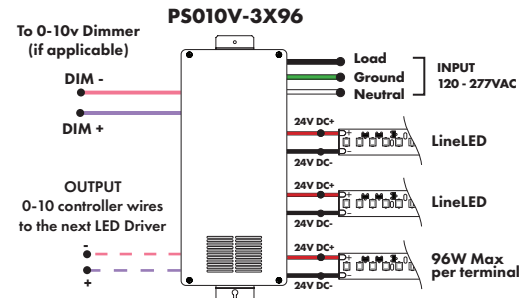
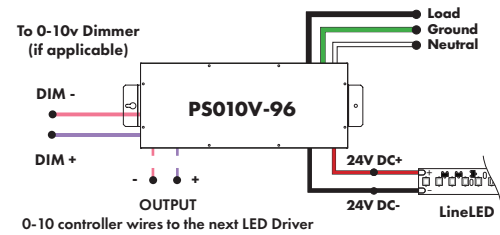
Power Supplies

See Power Supply instructions and spec sheet for wiring information. For a complete list of compatible dimmers, see Compatible Dimming Chart on the Resources page.

0-10V Dimming Power Supplies 0.1% 120VAC - 277VAC

MODEL	POWER	OUTPUT	DIMMING
PS010V - 0-10V Power Supply dims down to 0.1%	96 - 96 Watt 3X96 - 3 X 96 Watt	24 - 24 VDC	LIN - Linear LOG - Logarithmic

MODELS	96W	3X96
Length	14.40"	13.00"
Width	5.20"	6.62"
Depth	2.60"	4.20"

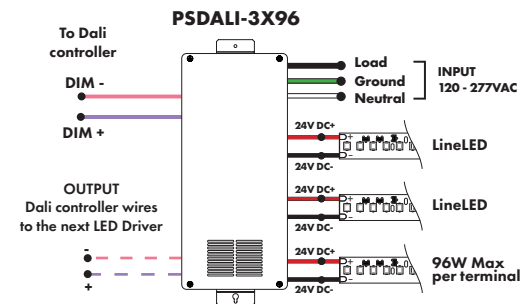
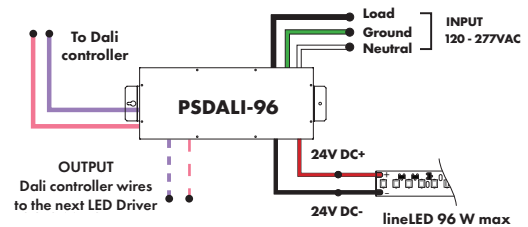


DALI 0% Dimming Power Supplies 120VAC - 277VAC

MODEL	POWER	OUTPUT
PSDALI - DALI Power Supply dims down to 0%	96 - 96 Watt 3X96 - 3 X 96 Watt	24 - 24 VDC

Features eldoLED's LINEARdrive configurable dimmable drivers

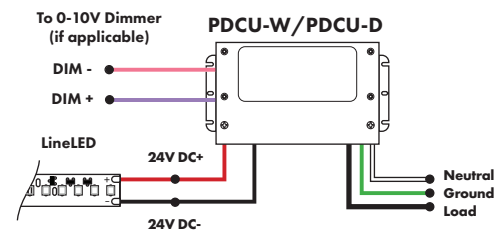
Model	96W	3X96
Length	14.40"	13.00"
Width	5.20"	6.62"
Depth	2.60"	4.20"



Universal Power Supply 1% 120VAC - 277VAC

MODEL	POWER	OUTPUT
PDCU-D - IP20 Dry Series	30 - 30 W 60 - 60 W 96 - 96 W 3X96 - 3X96 W	24 - 24 VDC
PDCU-W - IP66 Wet Series	96 - 96 W 3X96 - 3X96 W	

0-10V dims down to 1%, MLV/ELV/TRIAC dims down to 1%.
For a complete list of compatible dimmers, see [Compatible Dimming Chart](#) on the Resources page.



MODEL	PDCU-W-96W	PDCU-W-3X96W	PDCU-D-30W	PDCU-D-60W	PDCU-D-96W	PDCU-D-3X96W
Length	8.66"	11.85"	6.10"	7.93"	8.25"	9.57"
Width	3.73"	4.32"	3.35"	3.35"	4.10"	5.94"
Depth	1.61"	1.81"	1.33	1.32"	1.56"	1.13"

Power Supplies

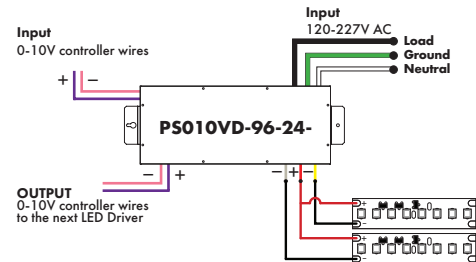
See Power Supply instructions and spec sheet for wiring information. For a complete list of compatible dimmers, see Compatible Dimming Chart on the Resources page.

Customizable Dim to Warm or Variable White via 0 - 10V (for tunable white or warm dimming control of Dynamic option)

MODEL	POWER	OUTPUT	CONTROL
PS010VD-0-10V Vintage Dim LED Driver	96-96 Watt	24-24 VDC	W2I-Standard dimming for both tapes

*Zonal control power supplies

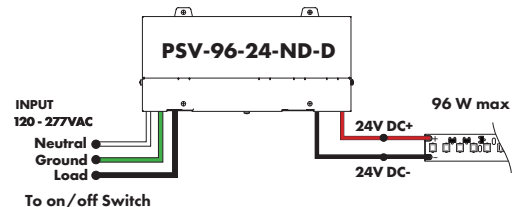
MODELS	96W
Length	14.40"
Width	5.20"
Depth	2.60"



Non-Dimming Power Supply 120VAC - 277VAC

MODEL	POWER	OUTPUT	DIMMING	LOCATION
PSV - PSV Series	96 - 96 Watt	24 - 24 VDC	ND - Non Dimming	D - Damp

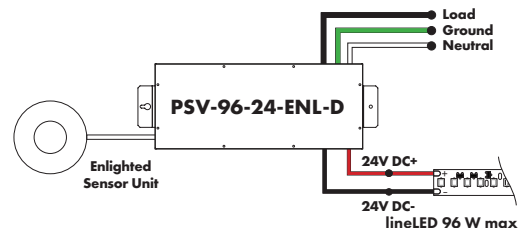
MODELS	96W
Length	8.25"
Width	3.75"
Depth	1.63"



Enlighted Enabled Dimming Power Supplies 120VAC - 277VAC

MODEL	POWER	OUTPUT	DIMMING	LOCATION
PSV - PSV Series	96 - 96 Watt	24 - 24 VDC	ENL - Enlighted Dimming dims down to 0%	D - Damp

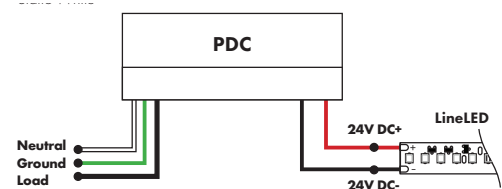
Model	96W
Length	14.40"
Width	5.20"
Depth	2.60"



Triac, MLV, ELV Compatible Dimmers

MODEL	POWER	OUTPUT
PDC - (IP20) Power Supply	96 - 96 Watts	24 - 24 VDC

MODELS	96W
Length	8.25"
Width	4.10"
Depth	1.56"



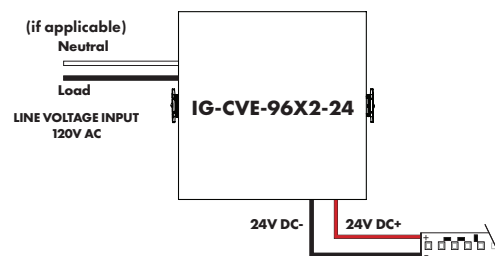
Power Supplies

See Power Supply instructions and spec sheet for wiring information. For a complete list of compatible dimmers, see Compatible Dimming Chart on the Resources page.

In-Ground Power Supplies

MODEL	POWER	OUTPUT	INPUT
IG - In ground CVE Series	CVE - ELV Dimming DALI - eldoLED Dali dimming Both dims down to 0%	96X2 - 2 X 96 Watt 24 - 24 VDC	Blank - 120 V 277 - 240/277 V

MODEL	Dual Circuit
Length	8.40"
Width	8.30"
Depth	8.10"

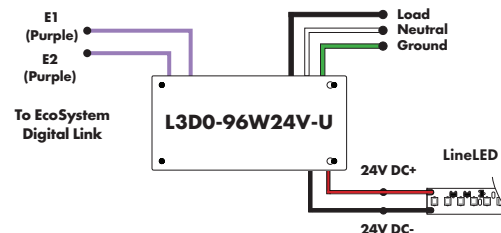


Luminii is a Lutron OEM Advantage Partner

Lutron Power Supplies 0.1%

MODEL
L3D0-96W24V-U
HiLume™ 0.1% EcoSystem Voltage LED Driver with Soft-On, Fade-to-Black™ 96W max

MODELS	L3D0
Length	10.50"
Width	5.50"
Depth	2.00"



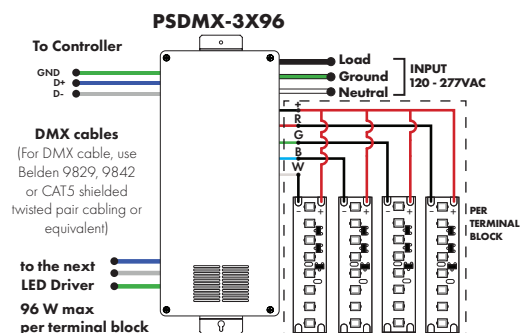
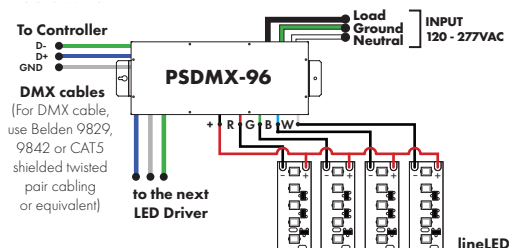
DMX Dimming Power Supplies 120VAC - 277VAC

MODEL	POWER	OUTPUT
PSDMX - DMX Power Supply dims down to 0%	96 - 96 Watt 3X96 - 3 X 96 Watt	24 - 24 VDC

Features eldoLED's LINEARdrive configurable dimmable drivers

*Zonal control power supplies. Control multiple tapes/zones using DMX channels.

MODEL	96W	3X96
Length	14.40"	13.00"
Width	5.20"	6.60"
Depth	2.60"	4.20"



Decoders



MODEL

DDMX-5CH-RDM-PRO

DDMX-5CH-RDM-PRO-DMX512 Decoder

DMX512 decoder with RDM functionality features 5 PWM output channels with common anode. High PWM output frequency range allows the product to be used in HD video conferencing spaces. All DMX products to be installed per DMX512 Standard.

Power
96 Watt**Inputs**
RJ45, XLR-5Pin, Terminal Block**DMX Channels**
1 to 5 settable**PWM Output Resolution Ratio**
8 or 16 bit**PWM Output Frequency**
500Hz - 30KHz**Output Dimming Curve Gamma Value**
0.1 ~ 9.9

MODEL

DDMX-RGBW

DDMX-RGBW - DMX512 Decoder

Translates controller DMX512 programs for RGB and white LED strips.

Unique DMX address for the decoder can be set easily and displayed by the numeric display on the case. Changing and resetting the DMX address requires manual input.

Use power repeater to expand output (Luminii part# RGBW-SR).

Operating Voltage
12-36 VDC**Power Capacity**
up to 96W at 24V**Operating Temperature Range**
from -4°F to +122°F in case**PWM Output Frequency**
200Hz or 1500Hz

MODEL

RGBW-RC-R

RGBW-RC-R - RGBW receiver

The RGBW receiver is easily paired with controller by the click of a button. Receiver can be reset to factory settings at any time.

Each receiver can store one static RGB color, one color sequence, and one brightness setting for the white LED strip. Receivers assigned to the same scene within the same zone will have the same LED static color and color sequence.

Operating Voltage
12-36 VDC**Power Capacity**
up to 96W at 24V**Operating Temperature Range**
from -4°F to +122°F in case

Decoders



MODEL

RGBW-SR

RGBW-SR - RGBW signal repeater

Extends identical signal when connected in series to an RGBW LED control system. The RGBW signal repeater works with Luminii RGB and RGBW controllers, receivers, and decoders.

RGBW signal can be extended indefinitely when adequate power supply (not included) is connected to the system.

Operating Voltage
12-36 VDC

Power Capacity
up to 96W at 24V

Operating Temperature Range
from -4°F to +122°F in case



MODEL

RGBW-WI-R

RGBW-WI-R - WIFI generator

RGBW-WI-R creates a local network that enables any electronic device (phone, tablet, etc.) to control the RGB/W strip connected to a RGBW-RC-R receiver.

The control functions are achieved through a free application download for Android and iOS devices called REALCOLOR.

Operating Voltage
12-36 VDC

Power Supply
PI-130-24 (included)

Operating Temperature Range
from -4°F to +122°F in case



MODEL

TSDMX-E

TSDMX-E - Touchscreen DMX controller

Programmable advanced DMX512 lighting controller featuring a touch-screen interface. Operates as stand alone controller or integrated with most architectural lighting control systems. Can controller endless DMX512 enabled devices.

Mounts to standard single or dual gang wall box with the included power supply inside the junction box. Terminal block design for power and data connections.

Features

- Sleek glass design which sits 0.43" from the wall
- Graphical color display to show selected environment
- Color/dimmer/speed palette
- Color temperature mixing
- Touch sensitive buttons. No mechanical parts
- Touch sensitive wheel allows for accurate color selection
- Multi-zone microSD memory
- Multi-room control with 500 scenes, 10 zones
- 1024 DMX channels. Control 340 RGB fixtures
- USB & Ethernet connectivity for programming and control

Power Supply

7 VDC (included)

Programmability

PC, Mac, Tablet, Smartphone

Output Signal

DMX512 (1024 channels)

Color Parameters

- Brightness
- Saturation
- Speed of color changing sequence
- Fading / dimming / brightness

Legacy Conversion

Legacy LL Tapes				NEW LL Tapes			
	lm/ft	W/ft	LPW		lm/ft	W/ft	LPW
LL18	125	1.6	78	LL42-SO	130	1.4	98
LL30	200	2.7	74	LL42-HO	225	2.4	92
LL36	250	3.2	78	LL42-VHO	320	3.6	96
LL72-LO	310	4.0	78	LL72-SO	270	2.8	96
LL54	390	5.2	67	LL72-HO	440	4.8	98
LLX18	350	4.9	80				
LLX22	450	5.5	82	LL72-VHO	540	6.0	90
LL72	500	6.5	77				